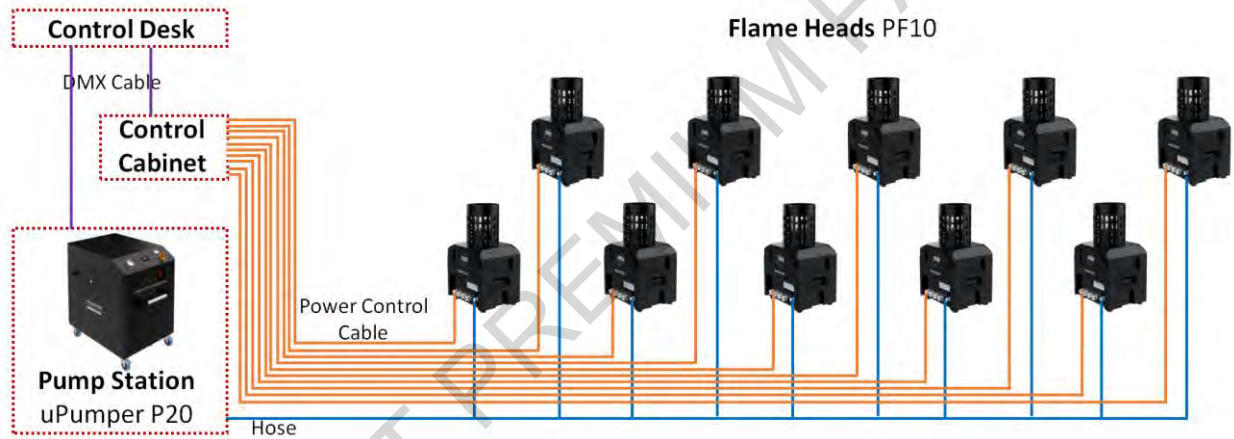
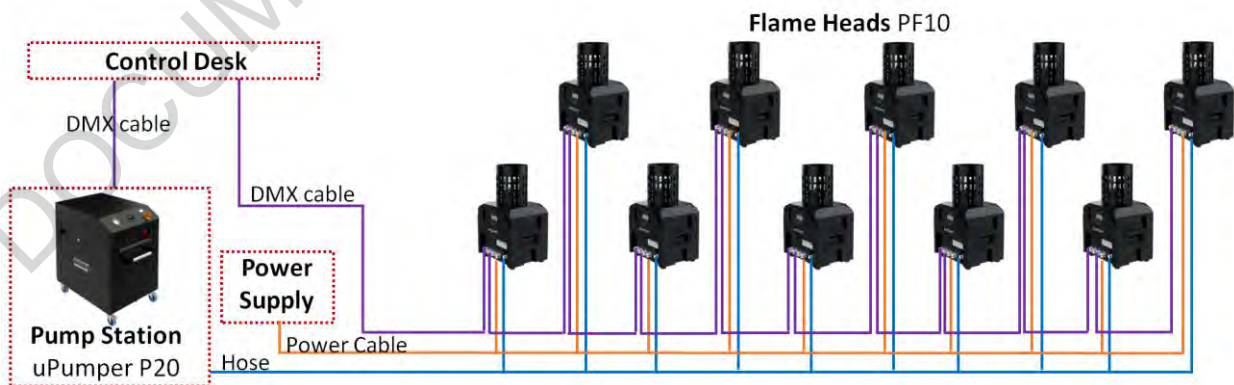


SHOWVEN SINGLE FLAME SYSTEM

SHOWVEN SINGLE FLAME SYSTEM is a flame system with liquid fuels such as ISOPAR G, ISOPROPANOL etc. It consists of flame head uFlamer PF10, pumping station uPumper P20 and some accessories such as hoses, cables etc. uFlamer PF10 is IP67 rated waterproof flame head, effect up to 10m. uPumper P20 is a pumping station support as much as 20 flame heads (the actual cascade quantity will also be related with the vertical height of flame heads installed). This system with direct on-off control or DMX control optional, it is designed for outdoor installations in theme park etc projects or for the events where flame heads are installed on truss.



DIRECT ON-OFF CONTROL



DMX CONTROL

SHOWVEN SINGLE FLAME SYSTEM

SHOWVEN SINGLE FLAME SYSTEM is a hydraulic based flame effect solution for project or truss mounted installations. It consists of flame head, pump station, control box and accessories such as hoses, cables etc. It can easily achieve remote fuel supply with the pump station and no nitrogen tank needed. Any installation direction of flame heads brings endless design inspiration to event planners. In order to meet the requirements of different application scenarios we designed two pump stations (uPumper P20 and uPumper P4) and two flame heads (uFlamer PF10 and Circle Flamer X1800).

uPumper P20



Features

- \ Reinforced 304 stainless steel housing
- \ Remote fuel and pressure supply
- \ Built in pump, no Nitrogen tank needed
- \ 250L extra large fuel tank
- \ Support 20 flame heads
- \ Electronic digital fuel level display
- \ Configured with pressure monitoring
- \ Intelligent solenoid valve block design ensure system pressure under control

Specifications

Dimension

1100 x 700 x 1095 mm

Net Weight

285 kg

Housing material

304 stainless steel

Input

AC380V

Work power

6KW

Tank capacity

250L

Pump output

110L/min

Max. supported Flame heads

20 heads

Work TEMP.

-20 – 50°C

Support Fuel

ISOPAR

Compatible Flame Head

PF10, X1800

uPumper P4**Features**

- \ Reinforced 304 stainless steel housing
- \ Remote fuel and pressure supply
- \ Built in pump, no Nitrogen tank needed
- \ 32L fuel tank
- \ Support 4 flame heads
- \ Electronic digital fuel level display
- \ Configured with pressure monitoring
- \ Fueling and pressurize function switchable

Specifications**Dimension**

580 x 420 x 460 mm

Net Weight

48 kg

Housing material

304 stainless steel

Input

AC200-240V / AC100-120V, 50-60Hz

Work power

1800W

Tank Capacity

32L

Max. supported Flame heads

4 heads

Pump Output

15L/min

Support Fuel

ISOPAR

Working Mode

Pressurize / Fueling

Compatible Flame Head

Pressurize: PF10, X1800

Fueling: uFlamer Volcano

uFlamer PF10



Features

- \ IP67 rated waterproof
- \ Designed for fixed outdoor installations
- \ Dual solenoid valve for extra safety
- \ Dual igniter ensure successful ignition
- \ Flames up to 10m
- \ Aluminum CNC machining structure
- \ Oxidation treated housing, durable for outdoor installation
- \ Highlight digital tube display convenient for remote debugging
- \ Infrared remote control realizes non-contact setting
- \ Built-in accumulator
- \ DMX / direct ON-OFF control customizable
- \ 220V, 110V, 24V etc. voltage customizable

Specifications

Dimension

250 x 200 x 410 mm

Net Weight

15 kg

Housing material

Aluminum

Input

220V, 110V, 24V customizable

Work power

120W

Flame height

Up to 10m

Min. firing duration

0.1s

Fuel

ISOPAR

Fuel consumption

60ml/s (Nozzle M), 30ml/s (Nozzle L)

Ignition

Dual, high voltage electron ignition

Control

DMX, Direct ON-OFF customizable

Waterproof level

IP67

Quick Couplers

ISO7241B G1/4 male

Accumulator

0.5L

Work pressure range

8-10bar

Installation angles

Any direction even upside down

Circle Flamer X1800



Features

- \ 210° swivel angles
- \ IPX4 rated waterproof, can be used in rain
- \ Dual solenoid valve for extra safety
- \ Dual ignitor ensure successful ignition
- \ 88 preset firing sequences, easy to operate
- \ Support 9-60V pyro signal
- \ Flames up to 10m
- \ Stainless steel housing
- \ Built-in accumulator
- \ DMX control, both 3-pin and 5-pin XLR

Specifications

Dimension

370 x 380 x 380 mm

Net Weight

19 kg

Housing material

304 Stainless steel

Input

220V, 110V

Work power

260W

Flame height

Up to 10m

Waterproof level

IPX4 for horizontal installation

Quick Couplers

ISO7241B G1/4 male

Accumulator

Min. firing duration

0.1s

Firing Angle

210° (±105°)

Fuel

ISOPAR

Fuel consumption

60ml/s (Nozzle M), 30ml/s (Nozzle L)

Ignition

Dual, high voltage electron ignition

Control

DMX, 9-60V Pyro signal

YES

Work pressure range

8-10bar

Installation angles

Any direction (bottom panel not waterproof)

Other Accessories

Hose

High pressure steel wire braided rubber hose.

Main hose is used to connect between uPumper P20 to fuel dispenser.

Branch Hose is used to connect between fuel distributor to flame head, uPumper P4 to flame head.



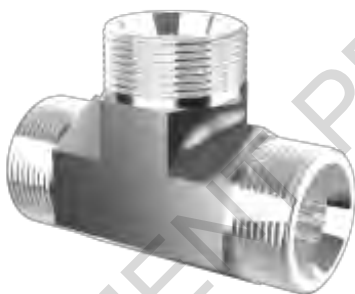
Main Hose 1 1/4 DN32



Branch Hose 3/8 DN10

Fuel Distributor

Fuel distribution between pump station and flame heads.



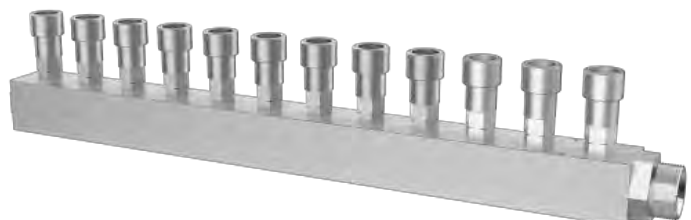
T-shape distributor T 1 1/4 - 1 1/4 - 1 1/4



T-shape distributor T 1 1/4 - 3/8 - 1 1/4



Fuel distributor 1 TO 6



Fuel distributor 1 TO 12

uControllBox C12

uControllbox C12 is voltage output signal control module, it is used in DIRECT ON-OFF control mode in SHOWVEN® flame system the function is to convert the DMX signal from the master console into a voltage signal for output, and control ignition and firing of flame head through the output voltage. A unit of uControllbox C12 maximum support 12units of flame head. It is designed for installation in electrical cabinet.



Effect

